

Reaction Torque Sensor

Engineered for static and dynamic testing of shafting.



Reaction Torque Sensors

We offer standard and customised design reaction torque sensors in flanged, hollow flange & both end keyed shaft type upto capacity 50,000 N-m.

Applications

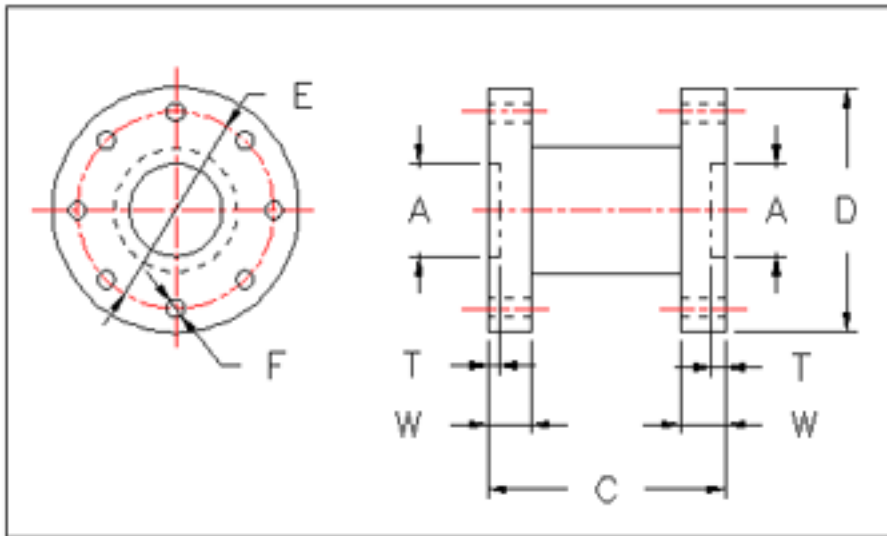
- Axle shaft testing.
- Fatigue testing of prop shaft.
- Clutch plate assembly.
- Auto brake & drum assemblies
- Couplings & universal joints.

Features

- Rugged, high torsional stiffness.
 - No moving part hence no maintenance.
 - Higher resistance to bending moment.
 - Customised design.
 - Fatigue rated Design.
 - Minimal friction error.
-

Reaction Torque Sensor

Dimensions



Model No.	Capacity in kg-m	Dimensions						
		A	C	D	E	F	T	W
1002-0.25K	25	40	75	100	80	09	03	12
1002-0.5K	50	40	75	100	80	09	03	12
1002-1.0K	100	50	90	125	110	10	06	20
1002-2.0K	200	50	90	125	110	10	06	20
1002-6.0K	600	90	190	200	165	17	08	40
1002-10K	1000	90	190	200	165	17	08	40
1002-22K	2200	100	215	250	205	20	08	40
1002-35K	3500	150	270	355	280	26	08	50
1002-50K	5000	150	270	355	280	26	08	50



Mechanica Systems

Plot No. 46, Lane No. 13, Sahakarvrinda Scty., Paramhans Nagar,
Off Paud Road, Kothrud, Pune – 411 038
Telefax: 91 020 2538 6905 Email: mechanicas@vsnl.net